

INIALA



AT A GLANCE

Iniala Beach House comprises of three villas and a penthouse residence with a total of 10 bedrooms.

Each villa has 3 bedrooms, a living room, dining area and private spa as well as a private pool and large deck area.

Our penthouse is a large one-bedroom residence with pool and terrace overlooking the Andaman Sea and is perfect for honeymooners.

Idyllically situated on Natai Beach, just 20 minutes north of Phuket International Airport.

A team of 10 international designers worked to create the unique spaces within each villa.

Each guest has a dedicated Villa Manager, Chef, Spa Therapist and Driver for the duration of their stay.

We also have a dedicated Kids Hotel that sleeps up to 12 children and has a full range of activities and childcare service.

The Iniala Art collection perfectly complements the interior designs, with over 40 pieces on display. We also have a dedicated Art Gallery showcasing established and emerging artists from the region.

Iniala Beach House supports the Inspirasia Foundation and gives 10% of room revenue to fund projects in Thailand and Asia.

CAMPANA BROTHERS

COLLECTOR'S VILLA



THE CERAMIC COURTYARD

Humberto Campana visited Thailand to be immersed in the rich art and craft culture of this amazing country. After a visit to Wat Arun in Bangkok and the celadon manufacturers in Chiang Mai, he created a concept for the courtyard, which is usually the centre of the contemporary Thai house and now the heart of the Beach House.

Using celadon, a traditional Thai ceramic Humberto created a design concept using pillars of the courtyard in blue and green celadon. Over 3500 pieces were used in the process and 800 man-hours were needed to create this finish. If you look carefully you will see elephants, flowers and turtles.

THE CINEMA OF NATURE

This villa has a fantastic cinema that may comfortably seat 20 guests, with Quad surround sound speakers and a 160" screen, complete with the latest 3-D technology projector. The Campana's inspiration for this design was to create a 'cinema of nature' and Humberto created an interior design using coconut matting, an abundant natural material found in Thailand, and also created a special green edition of their 'Cipria' sofa.



7

THE PEARL SPA

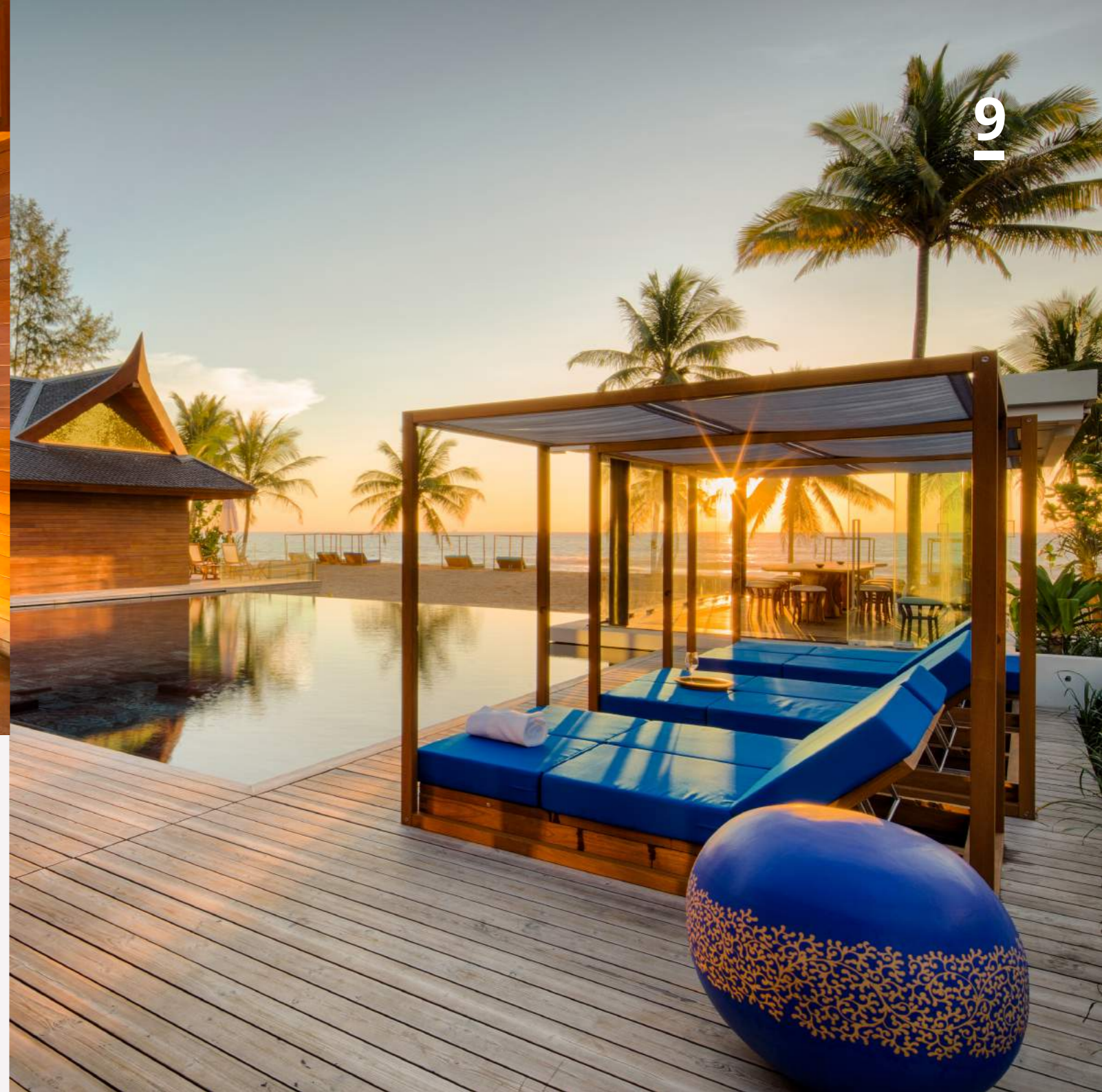
A truly awe-inspiring interior inspired by the inside of an oyster, the walls and ceiling of this private spa are covered in mother of pearl. Gold and bronze furniture complement this shimmering space, as does the original artwork of Indonesian artist Rocka Radipa.



THE LIVING ROOM OF THE SEA

Humberto carried his artisan and ceramic theme into the main living room of the Collector's Villa. Each gable end wall is encrusted with thousands of ceramic plates, cups and bowls and was influenced by the use of ceramic on the temple, Wat Arun in Bangkok. The inspiration in this space was the ocean and the room itself looks out over the infinity pool and straight onto the azure blue waters of the Andaman Sea.

The oversized special edition sofa dominates the room and provides a perfect central seating space to relax in the evenings. The Grinza armchairs and side tables in leather were specially designed for this space. The roof detail is in woven rattan and was inspired by the golden sand from the beach.





JOSEPH WALSH

COLLECTOR'S VILLA

11



THE CARPENTER'S CHAMBER

As you enter the Carpenter's Chamber you become immediately aware of an overwhelming sense of serenity. Joseph Walsh has created an extraordinary space and has curated some of his finest work into this sublime showcase of his craftsmanship.

The centrepiece is the wonderful bedroom area and a beautiful tapestry provides the backdrop to the spectacular bed; an amazingly fluid sculpture and highly collectible piece, there's a waiting list of 18 months to receive one of these masterpieces and a price tag of \$200,000 USD.

An exquisite 'Equinox' wall divides the room and the lounge area is perfect for relaxing. If you must check on your work whilst at the Beach House, this suite has a beautiful office area with a sumptuous Walsh desk and chair.

MARK BRAZIER-JONES

COLLECTOR'S VILLA

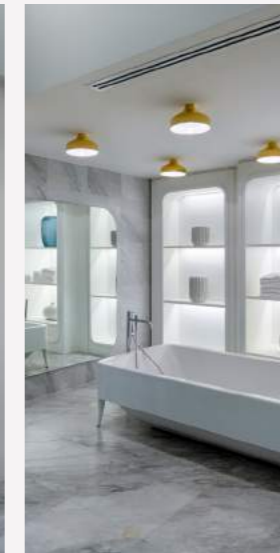


THE BOUDOIR

Every room is different and every room is a surprise; that was the inspiration behind the design concept from owner Mark Weingard and Mark Brazier-Jones. This suite certainly surprises with a gothic boudoir of sensuality.

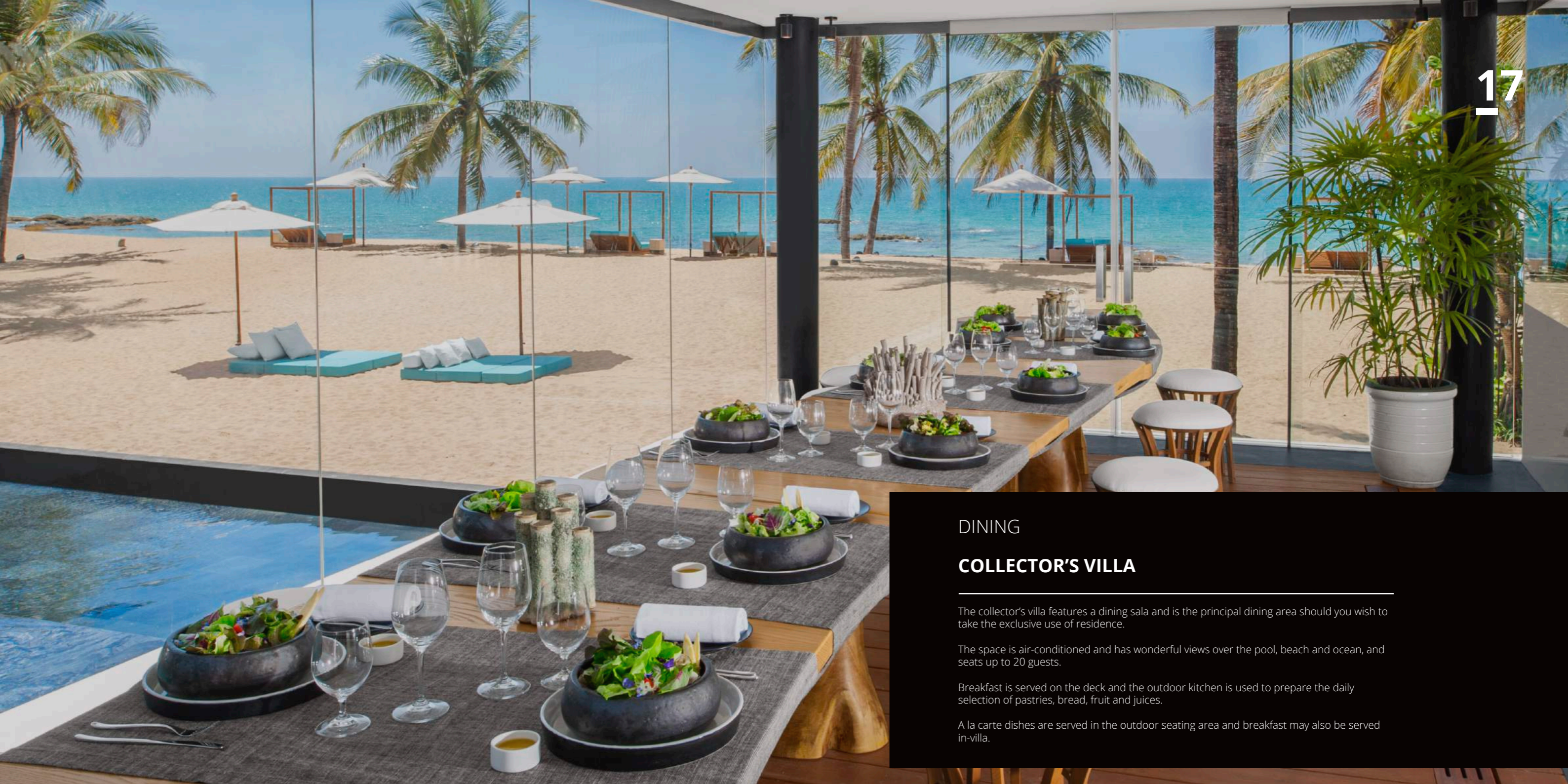
Brazier-Jones has created a space that is a sanctuary from the tropical sun, an interior awash with silks, crystal and metallic structures. The playful and whimsical interiors are complete with loose furnishings including Swarovski laden side tables and a shimmering drinks trolley, inspired by a vintage motorcycle.

JAMIE HAYON

COLLECTOR'S VILLA**THE OWNER'S SUITE**

This suite was originally the owner's bedroom and has a stunning beach front position and wins the best bedroom view in the Beach House. Jamie Hayon has created a bright and welcoming beach suite, with an elegant interior and whimsical details such as the 'clown' door and lamps.

The whitewashed wood and airy feel gives this a true 'beach house' feel and the large bathroom is breathtakingly beautiful. The terrace is private and has a sun lounger table and chairs as well as built in loungers on the terrace.



DINING

COLLECTOR'S VILLA

The collector's villa features a dining sala and is the principal dining area should you wish to take the exclusive use of residence.

The space is air-conditioned and has wonderful views over the pool, beach and ocean, and seats up to 20 guests.

Breakfast is served on the deck and the outdoor kitchen is used to prepare the daily selection of pastries, bread, fruit and juices.

A la carte dishes are served in the outdoor seating area and breakfast may also be served in-villa.



EGGARAT WONGCHARIT

VILLA SIAM



THE ANDAMAN AND SIMILAN SUITES

The two beach suites of this villa with their magical, dreamlike interiors are a fantastic place to relax. They have uninterrupted views of the beach and the turquoise sea and also have private terraces and access to the 18 metre lap pool that runs through the villa.

Eggarat's inspiration for these suites is nature and Thai culture, the beds and sofas are reminiscent of temple stupas as well as silkworm cocoons. The ornate bamboo detail, by artist Korakot, adds to the fluid organic nature of these rooms.

THE PHANG NGA LIVING ROOM

This lounge room is a cool, welcoming sanctuary from the midday sun. The islands of Phang-Nga bay inspired the furniture created for this room and the hanging sofas provide a perfect place to lie back and relax. Thai artists complete the unique nature of this space with photography, ceramics and tapestries.

The beautiful white and gold dining table seats six diners and is a perfect setting for any mealtime.



THE GOLDEN TEMPLE BELL SPA

Stepping inside this re-creation of a Thai Temple Bell, you are immediately overwhelmed by a feeling of serenity. The dome is covered in gold leaf and sacred Buddhist texts. The spa has an area for manicure and pedicure, massage and has a traditional Thai herbal steam tent.

Thai artist Korokot covers the exterior of the bell in ornate woven bamboo to complete the magical feeling of this very special private spa.

THE LOTUS SUITE

Water inspired the design of this suite. Dozens of bronze lotus flower leaves adorn the walls and ceilings above the bed and the artwork in the bathroom depicts the movement of water and fish. This suite has many references to traditional Thai craftsmanship including hand cut gold and silver mosaics traditionally found in the temples.



PHILOSOPHY OF DESIGN

VILLA BIANCA



THE MATRYOSHKA SUITE

The Matryoshka, or stacking doll, is a well-known Russian icon. Philosophy of Design have taken this form and created a fantastic accent to the design of this suite. The large round bed takes the doll outline as the headboard, as does the outdoor bath and the chair. Indonesian pop artist Hahan has added a splash of colour to the decor.

SPA BIANCA

Tucked away at the rear of the villa is a private oasis; complete with an outdoor bathing area, waterfall wall and treatment room for the ultimate in pampering, all contained within the privacy of the villa.



THE MATRYOSHKA SALON

To complement the design of the suite next door, Philosophy of Design have continued the playful theme of the full shape, clearly seen in the dining table design and the seating found in this living area. At the rear of the salon you will find a deck, modelled to replicate a luxury yacht, complete with teak floor.



A-CERO

VILLA BIANCA



A-CERO SEA SHELLS & II

Joaquin Torres' architectural firm 'A-cero' has designed many celebrity homes including Madonna, Penelope Cruz and many of the Real Madrid football stars. At Iniala A-cero has created two spectacular and dramatic interiors for two beach front suites.

Each suite has a bed with dramatic proportions; the forms of these beds are inspired by the interior of a shell. A-cero also designed many unique furniture pieces for these spaces including a vanity chest and chaise lounge. The mix of white furniture and natural wood gives a perfect beach house environment and the views through the doors are simply stunning.



GRAHAM LAMB

THE PENTHOUSE



THE PENTHOUSE

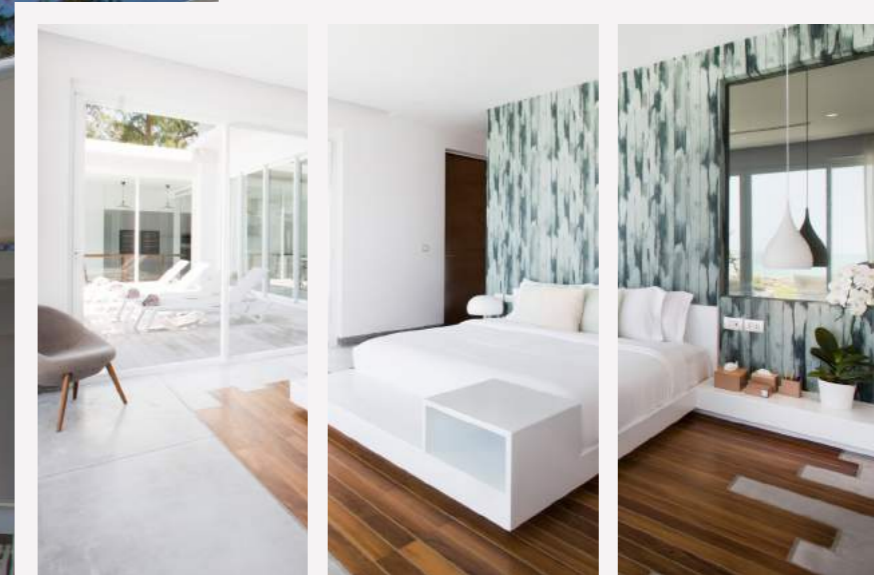
As you enter the Penthouse the floor literally melts away under your feet. The floor itself is a piece of furniture and was created to feel like you are walking on sand. The oversized 'cater' sofa is perfect for lounging and the kitchen space can be opened up ready for your personal chef to cook whatever you desire. The dining space overlooks the lake and lush jungle and guests may eat 'Japanese' style at the raised dining area.

The bedroom has a wonderful suspended white leather bed and an open plan shower and bathing area. A secondary bedroom can be made up by utilising the indoor dining space. An additional bathroom and walk in wardrobe completes this amazing space. Outside a large private deck offers lounging areas and a dining space, complete with swimming pool.



Iniala Presents

INIALA SHORES



TWO, THREE, FOUR & FIVE BEDROOM DELUXE FAMILY VILLAS

Iniala Shores, a collection of new deluxe family villas in Natai in Phuket, offering prime beachfront living for families or groups of friends seeking total relaxation.

Located 400m south of the Iniala Beach House, the four Iniala Shores Villas each offer five-bedrooms and spacious high-ceiling living and sleeping areas. Each villa has a private infinity pool with uninterrupted views of the golden sands of Natai Beach and across the Andaman Sea.

ULTIMATE FAMILY RETREAT

Housed within an exclusive private estate framed on one side by tall palm trees and the pristine Andaman sea on the other. The villas have been specifically designed to provide the ultimate family retreat on the beach. Features include an extensive outdoor sitting and lounge area as well as in-house private spa room with a wide variety of beauty, wellness and massage therapies providing the perfect haven to revitalize mind, body and spirit.



35

ABSOLUTE BEACHFRONT LIVING

With the ocean on your doorstep, there are a range of additional recreational activities available to all guests including a water sports and activity area located directly on the beach offering kayaking, paddle boarding and snorkelling.



CHRISTOPHER JONES

THE KIDS HOTEL



THE KIDS HOTEL

When children arrive at the Iniala Beach House they have the option of checking into their own hotel. They are given a backpack stuffed full of goodies and a book, 'The Island of Iniala' that tells an interactive story that is built into their stay.

Each day there are structured activities such as arts and crafts, outdoor play and cooking classes and for the more adventurous, there is an option to sleep over in one of the tree houses or inside a cave under the watchful eye of the Iniala childcarers.

WELLNESS



WELLNESS INIALA BEACH HOUSE

At Iniala Beach House, you may rest, rejuvenate or be invigorated. Our team of spa and wellness experts can cater to a wide range of spa and fitness treatments, personalised just for you.

Each villa has its own private spa with a dedicated spa therapist. Treatments include traditional Thai, Swedish and aromatherapy massage as well as beautifying facials, manicures, pedicures and reflexology.

Iniala also has a team of trainers to ensure your fitness levels are maintained whilst on holiday. Start your day the right way on the beach with boot camp or yoga or get your heart pumping with a Muay Thai class in the boxing ring. We also have a fully equipped gym with Technology cardio machines by Antonio Cittero and a free weights station.

If you like to do your cardio outdoors we have mountain bikes to tour the local area, paddle boats and the 7km stretch of beach is the ideal running track.



INIALA PRESENTS

ESENZI



ESSENCE OF THE SEA

Esenzi is a globally-influenced seafood restaurant set in the luxurious grounds of the ultra-exclusive; Iniala Beach House.

At Esenzi, service is silver but with a decidedly bronzed edge, as ever-professional wait-staff deliver the most immersive, elite dining experience in Thailand with the aim of bringing all the elements of the ocean right to your table.

The menu features elevated renditions of classic seafood preparations, successfully fusing great food, service and an exceptional scene as it appeals to the tastes of today's modern diner. Serving up dishes that are both contemporary and sophisticated - seasonal tasting menus as well as signature a la carte options with an emphasis on a streaming, sharable style of dining designed to cater to the varied palates of its international and well-heeled clientele.

INIALA PRESENTS

THE "I" DINING CONCEPT



CUISINE MADE JUST FOR YOU

Dining at Iniala is a personal experience. You can create your own daily menu based on your taste and dietary requirements headed up by Tim Butler and his head chef John Becker delivering wonderfully creative dishes from every major cuisine.

Each day our chefs create a menu with our guests, based on the freshest ingredients they have to work with, many of which are sourced from local suppliers.

Iniala also has its own bakery; creating artisan breads, perfect pastries and amazing chocolate and ice cream.



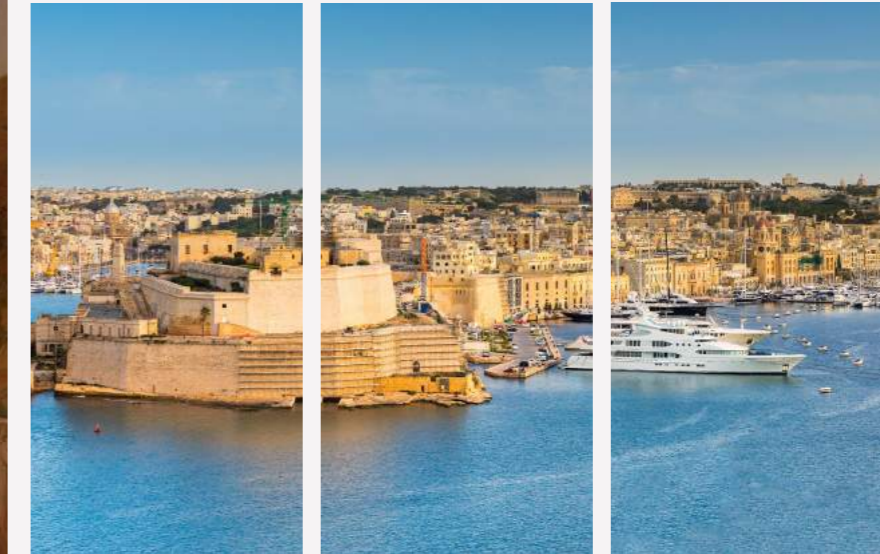
THE LOCATION



GOLDEN BEACHES & CRYSTAL BLUE SEA

Situated on the golden beaches of Natai and overlooking the crystal blue Andaman Sea, Iniala is located just 20 minutes North of Phuket International Airport and offers the very best tranquility and relaxation.

INIALA MALTA



OPENING 2018

Iniala will be opening the doors of its new Hotel in Malta in 2018. The Valletta hotel will bring a new dimension to service and experiential travel.

The Hotel consists of 4 beautiful houses and several ancient vaults. These houses and vaults have been lovingly restored. The interiors have been created by different designers.

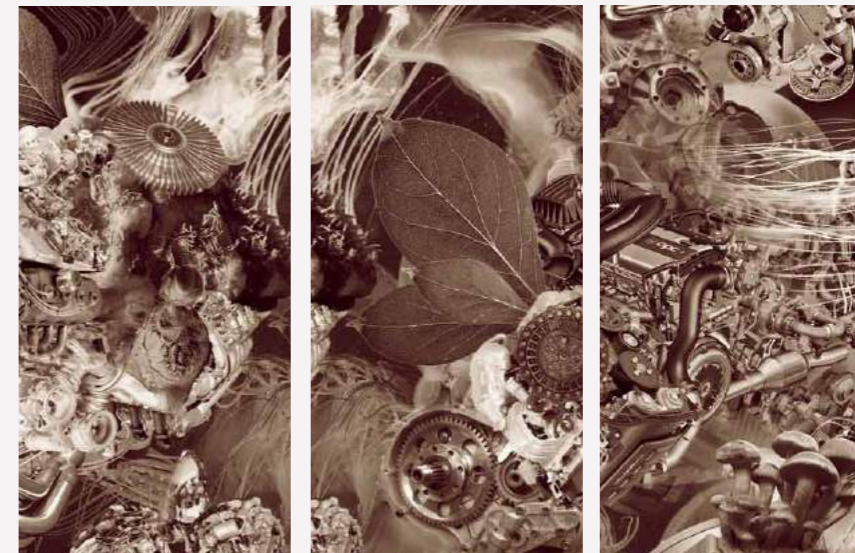
Within the hotel, guests will have access to a world class rooftop restaurant by Tim Butler, outdoor plunge pools, gym, spa rooms, sauna and steam rooms and an exclusive salon bar for guests only.

Situated on St. Barbara Bastions, Valletta. This is Malta's most exclusive street and overlooks the famous Grand harbour.

The Hotel itself will consist of 27 units across 4 houses. Each House will have its own identity but they will all share the same level of experience and service. A House Manager will look after the guests in each house who will be their source for everything from concierge services to butler service, giving guests 24 hour access to knowledge and assistance.



ART AT INIALA



ART AT INIALA

Iniala Beach House is a 'living gallery' with many rooms displaying art, sculpture and ceramics from South-East Asia's top artists. Iniala Art is a dynamic art repository of over 40 contemporary artworks that have been thoughtfully exhibited to enrich the unique design interiors and exterior landscaping of Iniala Beach House.

The Iniala Art Collection immerses visitors in a truly memorable cultural and creative environment that we aim to propel Iniala Beach House and its home of Natai Beach into Southern Thailand's artistic hub. The diverse and engaging display has been thoughtfully curated by Iniala Art & Design, a versatile and innovative advisory service committed to developing and promoting art and design internationally.

In addition to Iniala Art Collection's enriching art presentations, the newly opened Iniala Gallery will showcase exhibitions by both emerging and established, Asian and international artists and designers.



Inspirasia
FOUNDATION

inspirasia.org

INIALA SUPPORTS

INSPIRASIA



GIVING BACK

The Inspirasia Foundation is a private strategic philanthropic foundation supporting many health and education projects across South East Asia.

The Foundation applies the practice of applying professional skills and planning to grant making. At Inspirasia we draw on decades of collective experience and success in international finance, law, marketing, design and management to maximise the effectiveness and efficiency of our grants.

We work with small non-profits dedicated to providing possibilities. We fund projects and train leaders to maximise the potential of their resources and help improve as many lives as possible. We support programmes that create a chance for the disadvantaged to lead a fulfilling and healthy life through access to education, health care and programmes that provide new opportunities.

We currently support 12 projects across Indonesia, Thailand and India. If you feel inspired by our philosophy you can get more information by heading to our website www.inspirasia.org

**FIND OUT MORE AT
WWW.INIALA.COM**